

PJLink Specifications

Version 2.00
2017.1.31

1. Overview	4
2. Command Format	5
2.1. <i>Command line</i>	5
2.2. <i>Response line</i>	5
2.3. <i>Set commands</i>	6
2.4. <i>Get commands</i>	6
2.5. <i>Format</i>	7
3. Protocol	8
3.1. <i>Control protocol</i>	8
3.2. <i>Search protocol</i>	9
3.2.1. Search protocol procedure	9
3.2.2. Command descriptions	11
3.3. <i>Status Notification Protocol</i>	12
3.3.1. Procedure of status notification protocol.....	12
3.3.2. Command descriptions	14
4. Command Descriptions	16
4.1. <i>Power control instruction POWR</i>	16
4.2. <i>Power status query POWR ?</i>	17
4.3. <i>Input switch instruction INPT</i>	18
4.4. <i>Input switch query INPT ?</i>	20
4.5. <i>Mute instruction AVMT</i>	21
4.6. <i>Mute status query AVMT ?</i>	22
4.7. <i>Error status query ERST ?</i>	23
4.8. <i>Lamp number/ lighting hour query LAMP ?</i>	24
4.9. <i>Input toggling list query INST ?</i>	26
4.10. <i>Projector/Display name query NAME ?</i>	27
4.11. <i>Manufacture name information query INF1 ?</i>	28
4.12. <i>Product name information query INF2 ?</i>	29
4.13. <i>Other information query INFO ?</i>	30
4.14. <i>Class information query CLSS ?</i>	31
4.15. <i>Serial number query SNUM ?</i>	32

4.16. Software version query	<i>SVER ?</i>	33
4.17. Input terminal name query	<i>INNM ?</i>	34
4.18. Input resolution query	<i>IRES ?</i>	35
4.19. Recommend resolution query	<i>RRES ?</i>	36
4.20. Filter usage time query	<i>FILT ?</i>	37
4.21. Lamp replacement model number query	<i>RLMP ?</i>	38
4.22. Filter replacement model number query	<i>RFIL ?</i>	39
4.23. Speaker volume adjustment instruction	<i>SVOL</i>	40
4.24. Microphone volume adjustment command	<i>MVOL</i>	41
4.25. Freeze instruction	<i>FREZ</i>	42
4.26. Freeze status query	<i>FREZ ?</i>	43
5. Authentication		44
5.1. Authentication procedure		44
5.2. No authentication procedure (Security nullification)		46
5.3. Continuous command transmissions on the same connection		46
5.4. Disconnection		46
6. Application Conventions		50

1. Overview

As the demand for projectors/displays increases with the popularization of personal computers, many manufacturers have branched out into projector/display markets.

With the recent diversification of digital media and growth of IP networks, projectors/displays with a higher utility value, namely support for networks, become popular in the market.

Network-ready projectors/displays provide significant convenience for users: the constraints of placement location and distance are relaxed and it is possible to control and monitor more than one projector/display at once.

However, the convenience can be impaired by differences among manufacturers in control system configuration and command type. Projector/Display control software provided by a specific manufacturer can be used only for projectors/displays manufactured by the same manufacturer and would be useless in a large-scale system where multiple projectors/displays with different control systems and command types are to be controlled/monitored simultaneously. Some users have independently developed very complicated control software.

In order to eliminate such inconvenience and to promote network-ready projectors/displays, JBMIA has been working on the standardization of protocol used for controlling projectors/displays. Thus, a standard protocol for projectors/displays, “PJLink”, was designed.

It will be possible to control/monitor projectors/displays of different manufacturers or models with single-application software if the projectors/displays support “PJLink” a standard protocol for controlling projectors/displays. As a result, user convenience will be greatly improved. Especially, the time and cost for introducing projectors/displays as part of a system would be reduced, encouraging large-scale introduction of projectors/displays into firms and organizations.

This specification document defines Class 2 specifications which add and review the control command and also add the device search function and the spontaneous state notification function to Class 1, which performs the basic control of the projector/display.

In JBMIA, we plan to define other PJLink Classes tailored to the functions and purposes sequentially.

In “PJLink Class 2,” the followings are defined:

- Device search
- Procedure of connecting with a projector/display via network
- Security
- Control command form
- Spontaneous status notification

This document was prepared to complement Japanese document and the Japanese document have a priority to any contents of this document.

Indemnity conditions

- A. JBMIA provides no guarantee or support services whatsoever regarding the Specifications.
- B. JBMIA assumes no obligations regarding inquiries, corrections, version updates, support or maintenance regarding the Specifications.
- C. JBMIA accepts no responsibility whatsoever concerning any damage or liability (including loss of revenue or profits) arising either directly or indirectly from the use of the Specifications by the user.

2. Command Format

2.1. Command line

The structure of a PJLINK command line is as follows:

Header + Class	Command body	Separator (Space)	Transmission parameter	Terminator (CR)
2 bytes	4 bytes	1 byte	128 bytes or less	1 byte

The character strings that make up the PJLink command are all ASCII codes unless otherwise noted. All PJLINK command lines, without exception, start with ‘%’.

Added to the PJLINK header ‘%’ is a 1-byte ASCII numeric character that shows the PJLINK class.

In the command prescribed from Class 1, 1 is added, and in the command added from Class 2, 2 is added.

The command body is a 4-byte fixed-length string predetermined for each command.

The separator separates the command body from the transmission parameter. In command lines, a blank character (space: 0x20) is always used as the separator.

The transmission parameter is a variable-length string that can contain up to 128 bytes.

All command lines end with a terminator (carriage return code (CR): 0x0d).

The command body is case-insensitive. The transmission parameter may be case-sensitive when treated as an arbitrary string in accordance with the specifications of each command.

2.2. Response line

The structure of a response to a PJLINK command (hereinafter, simply “response”) is as follows:

Header + Class	Command body	Separator (=)	Response parameter	Terminator (CR)
2 bytes	4 bytes	1 byte	128 bytes or less	1 byte

The header and class of a response are the same as those of a command.

The command body contains the entire command line received by the projector/display.

The separator separates the command body from the response parameter.

Unlike in the case of a command, ‘=’ (equal: 0x3d) is always used for the separator of a response.

The response parameter contains the description of the response to the command.

The parameter is a variable-length string that can contain up to 128 bytes.

All responses end with a terminator (carriage return code (CR): 0x0d).

The command body is case-insensitive. The response parameter may be case-sensitive when treated as an arbitrary string in accordance with the specifications of each command.



2.3 Set commands

Commands fall into two broad categories: set command and get command.

Set commands are for operating the projector/display and changing the settings of the projector/display.

The parameter of a set command contains setting descriptions defined by the command.

The response parameter of a response to a set command generally contains any of the following response codes.

Detailed specifications of each command are given in Chapter 4.

The undefined command (ERR1) will be returned when received the unsupported commands by projectors/displays.

Definitions	Response codes
Successful execution	OK
Undefined command	ERR1
Out of parameter	ERR2
Unavailable time	ERR3
Projector/Display failure*	ERR4

* This is defined as a state in which the projector/display cannot continue to operate properly.

2.4 Get commands

The get command is used to obtain the current setting information of and data saved in the projector/display.

The parameter part of a get command contains the ‘?’ character, which identifies itself as a get command.

If the obtainment of info/data by the get command is successfully completed, the corresponding values are saved into the parameter part of the response based on the specifications of each command.

If the get command fails, generally any of the response codes listed below will be saved into the parameter part of the response. Detailed specifications of each command are given in Chapter 4.

If the command cannot be received when stand-by, the same error response as Unavailable Time will be returned. Detail information can be obtained from specifications of each projector/display.

The undefined command (ERR1) will be returned when received the unsupported commands by projectors/displays.

Definitions	Response codes
Undefined command	ERR1
Out of parameter	ERR2
Unavailable time	ERR3
Projector/Display failure*	ERR4

* This is defined as a state in which the projector/display cannot continue to operate properly.

2.5 Format

Set command

1 byte	1 byte	4 bytes	1 byte	Variable length	1 byte
%	Class	Command	Space	Transmission parameter	Carriage return code (CR)

[Successful execution] response

1 byte	1 byte	4 bytes	1 byte	2 bytes	1 byte
%	Class	Command	=	OK	Carriage return code (CR)

[Undefined command] response

1 byte	1 byte	4 bytes	1 byte	4 bytes	1 byte
%	Class	Command	=	ERR1	Carriage return code (CR)

[Out of parameter] response

1 byte	1 byte	4 bytes	1 byte	4 bytes	1 byte
%	Class	Command	=	ERR2	Carriage return code (CR)

[Unavailable time] response

1 byte	1 byte	4 bytes	1 byte	4 bytes	1 byte
%	Class	Command	=	ERR3	Carriage return code (CR)

[Projector/Display failure] response

1 byte	1 byte	4 bytes	1 byte	4 bytes	1 byte
%	Class	Command	=	ERR4	Carriage return code (CR)

Get command

1 byte	1 byte	4 bytes	1 byte	1 byte	1 byte
%	Class	Command	Space	?	Carriage return code (CR)

[Successful execution] response

1 byte	1 byte	4 bytes	1 byte	Variable length	1 byte
%	Class	Command	=	Response parameter	Carriage return code (CR)

[Undefined command] response

1 byte	1 byte	4 bytes	1 byte	4 bytes	1 byte
%	Class	Command	=	ERR1	Carriage return code (CR)

[Unavailable time] response

1 byte	1 byte	4 bytes	1 byte	4 bytes	1 byte
%	Class	Command	=	ERR3	Carriage return code (CR)

[Projector/Display failure] response

1 byte	1 byte	4 bytes	1 byte	4 bytes	1 byte
%	Class	Command	=	ERR4	Carriage return code (CR)



3. Protocol

3.1. Control protocol

The TCP/IP protocol is used for communication between the adaptable projector/display and the controlling PC.

The projector/display is set as the server and the CONTROLLER as the client. In other words, establishment and termination of communication are determined by the client CONTROLLER (hereinafter, “CONTROLLER”).

Port name	pjlink	TCP 4352 port
-----------	--------	---------------

To operate multiple projectors/displays, the CONTROLLER creates a TCP/IP session per projector/display. The CONTROLLER identifies each projector/display by its IP address.

The CONTROLLER controls the projector/display by sending PJLINK commands. Upon receiving a command, the projector/display returns a predetermined PJLINK response. Such sending and response attains the smallest unit of controlling communication. Details of PJLINK commands and the responses to them are given in Chapter 4.



3.2. Search protocol

The UDP protocol is used for searching a projector/display.

A search start command is sent from the controller side, and the projector/display side transmits a search response after receiving the search start command.

Port name	pjlink	UDP 4352 port
-----------	--------	---------------

The controller can search the projectors in the network by sending a search start command to the broadcast address (e.g., 192.168.0.255 when the subnet address is 255.255.255.0, or ff02::1 for IPv6).

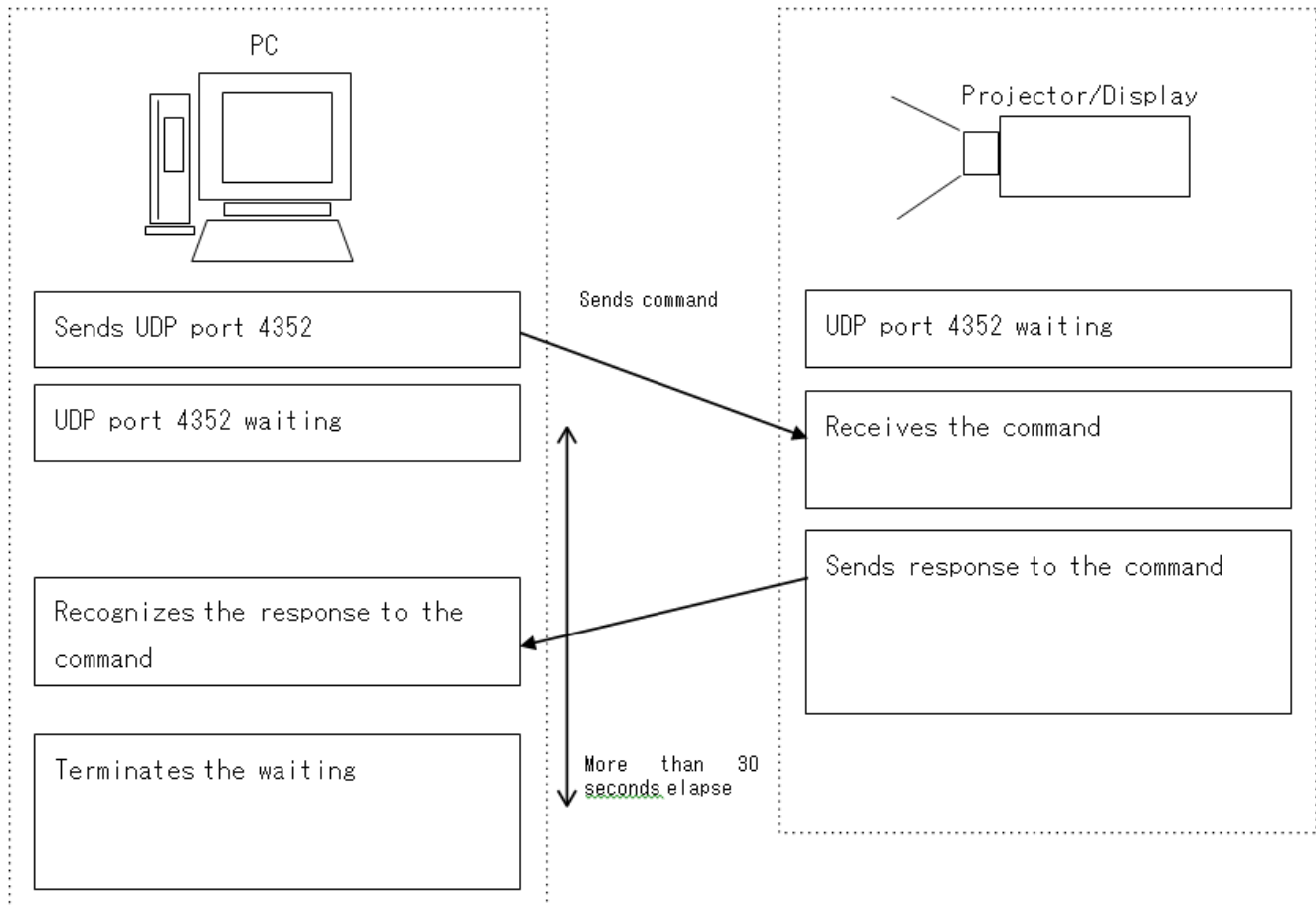
In the search response of the projector, the MAC address of the projector is prescribed, and access to the projector can be made based on this information.

3.2.1. Search protocol procedure

The search procedure is as follows.

1. A search start command is transmitted to the broadcast address from the controller.
2. The controller receives all of the responses from the projectors/displays for 30 seconds.
3. After receiving the search start command from the controller, the projector/display transmits a search response in random time (0 to 10 seconds).
4. Upon receiving the response, the controller accesses the projector, based on the MAC address in the search response or the information on the IP address for the communication packet.

Fig. 1 Procedure of search protocol



3.2.2 Command descriptions

Search start instruction

Character code in hexadecimal	25	32	53	52	43	48	0d
Character	%	2	S	R	C	H	(CR)

Search response

Character code in hexadecimal	25	32	41	43	4B	4E	3D		...		0d
Character	%	2	A	C	K	N	=		*1		(CR)

*1 MAC address of projector/display

The form of MAC address will be xx:xx:xx:xx:xx:xx.

3.3. Status Notification Protocol

The UDP protocol is used for noticing the state of the projector/display.

Port name	pjlink	UDP	4352 port
-----------	--------	-----	-----------

As for the IP address registered in advance, the projector/display spontaneously transmits a command to the controller when the state changes.

The state change refers to the following cases.

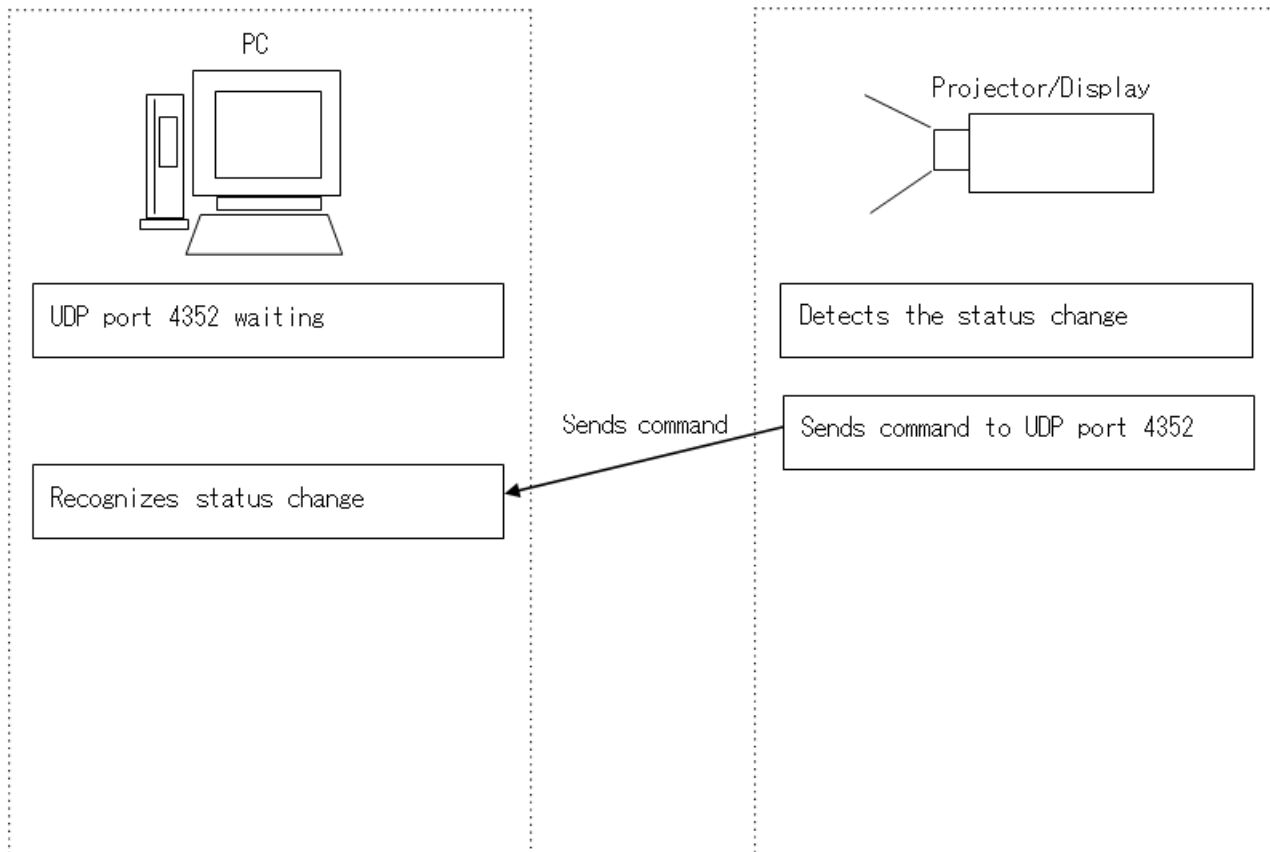
- At the time of transition to the warm-up state (or at the time of transition to the power on (lamp on) state when there is no warm-up)
- At the time of transition to the cooling state (or at the time of transition to the power off (standby) state when there is no cooling)
- At the time of change to Error condition
- When PJLink communication is ready (when the power cable for the projector/display is connected)
- When input switching is completed

3.3.1. Procedure of status notification protocol

The status notification procedure is as follows.

1. The projector/display detects a state change.
2. The projector/display sends a status notification command to the controller.

Fig. 2 Procedure of status notify protocol



3.3.2 Command descriptions

Status notify command (Linkup status)

Character code in hexadecimal	25	32	4C	4B	55	50	3D		...		0d
Character	%	2	L	K	U	P	=		*1		(CR)

*1 MAC address of projector/display
The form of MAC address will be xx:xx:xx:xx:xx:xx.

Status notify command(Error status)

Character code in hexadecimal	25	32	45	52	53	54	3D								0d
Character	%	2	E	R	S	T	=	*1	*2	*3	*4	*5	*6		(CR)

- *1 Fan error; any of 0-2
- *2 Lamp error; any of 0-2
- *3 Temperature error; any of 0-2
- *4 Cover open error; any of 0-2
- *5 Filter error; any of 0-2
- *6 Other errors; any of 0-2

0: No error detected or no error detecting function 1:
Warning
2: Error

Status notify command (Power status)

Character code in hexadecimal	25	32	50	4F	57	52	3D		0d
Character	%	2	P	O	W	R	=	*1	(CR)

*1 Power status

0 : Power-off(standby) status or cooling-down status 1 :

Power-on(lamp-on) status or warm-up status

Status notify command (Input status)

Character code in hexadecimal	25	32	49	4E	50	54	3D		0d
Character	%	2	I	N	P	T	=	*1	(CR)

*1 Input terminal after the change 11~

6Z detail in [4.4 INPT]

4. Command Descriptions

4.1. Power control instruction POWR

Power-on (lamp-on) instruction

Character code in hexadecimal	25	31	50	4f	57	52	20	31	0d
Character	%	1	P	O	W	R	(SP)	1	(CR)

Power-off (standby) instruction

Character code in hexadecimal	25	31	50	4f	57	52	20	30	0d
Character	%	1	P	O	W	R	(SP)	0	(CR)

Response

Successful execution (including power-on instruction under power-on status and power-off instruction under power-off status)

Character code in hexadecimal	25	31	50	4f	57	52	3d	4f	4b	0d
Character	%	1	P	O	W	R	=	O	K	(CR)

Out-of-parameter

in hexadecimal	25	31	50	4f	57	52	3d	45	52	52	32	0d
Character	%	1	P	O	W	R	=	E	R	R	2	(CR)

Unavailable time

Character code in hexadecimal	25	31	50	4f	57	52	3d	45	52	52	33	0d
Character	%	1	P	O	W	R	=	E	R	R	3	(CR)

Projector/Display failure

Character code in hexadecimal	25	31	50	4f	57	52	3d	45	52	52	34	0d
Character	%	1	P	O	W	R	=	E	R	R	4	(CR)

*Commands are case-insensitive.

4.2 Power status query POWR ?

Power status query

Character code in hexadecimal	25	31	50	4f	57	52	20	3f	0d
Character	%	1	P	O	W	R	(SP)	?	(CR)

Response

Power-off (standby) status

Character code in hexadecimal	25	31	50	4f	57	52	3d	30	0d
Character	%	1	P	O	W	R	=	0	(CR)

Power-on (lamp-on) status

Character code in hexadecimal	25	31	50	4f	57	52	3d	31	0d
Character	%	1	P	O	W	R	=	1	(CR)

Cooling status

Character code in hexadecimal	25	31	50	4f	57	52	3d	32	0d
Character	%	1	P	O	W	R	=	2	(CR)

Warm-up status

Character code in hexadecimal	25	31	50	4f	57	52	3d	33	0d
Character	%	1	P	O	W	R	=	3	(CR)

Unavailable time

Character code in hexadecimal	25	31	50	4f	57	52	3d	45	52	52	33	0d
Character	%	1	P	O	W	R	=	E	R	R	3	(CR)

Projector/Display failure

Character code in hexadecimal	25	31	50	4f	57	52	3d	45	52	52	34	0d
Character	%	1	P	O	W	R	=	E	R	R	4	(CR)

*Commands are case-insensitive.

4.3 Input switch instruction INPT

Instruction to switch input to RGB (Class1)

Character code in hexadecimal	25	31	49	4e	50	54	20	31		0d
Character	%	1	I	N	P	T	(SP)	1	*1	(CR)
*1: values 1-9										

Instruction to switch input to RGB (Class2)

Character code in hexadecimal	25	32	49	4e	50	54	20	31		0d
Character	%	2	I	N	P	T	(SP)	1	*1	(CR)
*1: values 1-9 and A-Z										

Instruction to switch input to VIDEO (Class1)

Character code in hexadecimal	25	31	49	4e	50	54	20	32		0d
Character	%	1	I	N	P	T	(SP)	2	*1	(CR)
*1: values 1-9										

Instruction to switch input to VIDEO (Class2)

Character code in hexadecimal	25	32	49	4e	50	54	20	32		0d
Character	%	2	I	N	P	T	(SP)	2	*1	(CR)
*1: values 1-9 and A-Z										

Instruction to switch input to DIGITAL (Class1)

Character code in hexadecimal	25	31	49	4e	50	54	20	33		0d
Character	%	1	I	N	P	T	(SP)	3	*1	(CR)
*1: values 1-9										

Instruction to switch input to DIGITAL (Class2)

Character code in hexadecimal	25	32	49	4e	50	54	20	33		0d
Character	%	2	I	N	P	T	(SP)	3	*1	(CR)
*1: values 1-9 and A-Z										

Instruction to switch input to STORAGE (Class1)

Character code in hexadecimal	25	31	49	4e	50	54	20	34		0d
Character	%	1	I	N	P	T	(SP)	4	*1	(CR)
*1: values 1-9										

Instruction to switch input to STORAGE (Class2)

Character code in hexadecimal	25	32	49	4e	50	54	20	34		0d
Character	%	2	I	N	P	T	(SP)	4	*1	(CR)
*1: values 1-9 and A-Z										

Instruction to switch input to NETWORK (Class1)

Character code in hexadecimal	25	31	49	4e	50	54	20	35		0d
Character	%	1	I	N	P	T	(SP)	5	*1	(CR)
*1: values 1-9										

Instruction to switch input to INTERNAL (Class2)

Character code in hexadecimal	25	32	49	4e	50	54	20	36		0d
Character	%	2	I	N	P	T	(SP)	6	*1	(CR)
*1: values 1~9 and A~Z										

Response (Class1)

Successful execution

Character code in hexadecimal	25	31	49	4e	50	54	3d	4f	4b	0d
Character	%	1	I	N	P	T	=	O	K	(CR)

Nonexistent input source

Character code in hexadecimal	25	31	49	4e	50	54	3d	45	52	52	32	0d
Character	%	1	I	N	P	T	=	E	R	R	2	(CR)

Unavailable time (standby, etc.)

Character code in hexadecimal	25	31	49	4e	50	54	3d	45	52	52	33	0d
Character	%	1	I	N	P	T	=	E	R	R	3	(CR)

Projector/Display failure

Character code in hexadecimal	25	31	49	4e	50	54	3d	45	52	52	34	0d
Character	%	1	I	N	P	T	=	E	R	R	4	(CR)

Response (Class2)

Successful execution

Character code in hexadecimal	25	32	49	4e	50	54	3d	4f	4b	0d
Character	%	2	I	N	P	T	=	O	K	(CR)

Nonexistent input source

Character code in hexadecimal	25	32	49	4e	50	54	3d	45	52	52	32	0d
Character	%	2	I	N	P	T	=	E	R	R	2	(CR)

Unavailable time (standby, etc.)

Character code in hexadecimal	25	32	49	4e	50	54	3d	45	52	52	33	0d
Character	%	2	I	N	P	T	=	E	R	R	3	(CR)

Projector/Display failure

Character code in hexadecimal	25	32	49	4e	50	54	3d	45	52	52	34	0d
Character	%	2	I	N	P	T	=	E	R	R	4	(CR)

4.4 Input switch query INPT ?

Input selection query (Class1)

Character code in hexadecimal	25	31	49	4e	50	54	20	3f	0d
Character	%	1	I	N	P	T	(SP)	?	(CR)

Input selection query (Class2)

Character code in hexadecimal	25	32	49	4e	50	54	20	3f	0d
Character	%	2	I	N	P	T	(SP)	?	(CR)

Response (Class1)

Successful execution

Character code in hexadecimal	25	31	49	4e	50	54	3d			0d
Character	%	1	I	N	P	T	=		*1	(CR)
*1: values 11-59										

Unavailable time (input switch underway, standby, etc.)

Character code in hexadecimal	25	31	49	4e	50	54	3d	45	52	52	33	0d
Character	%	1	I	N	P	T	=	E	R	R	3	(CR)

Projector/Display failure

Character code in hexadecimal	25	31	49	4e	50	54	3d	45	52	52	34	0d
Character	%	1	I	N	P	T	=	E	R	R	4	(CR)

Response (Class2)

Successful execution

Character code in hexadecimal	25	32	49	4e	50	54	3d			0d
Character	%	2	I	N	P	T	=		*1	(CR)
*1: values 11-6Z										

Unavailable time (input switch underway, standby, etc.)

Character code in hexadecimal	25	32	49	4e	50	54	3d	45	52	52	33	0d
Character	%	2	I	N	P	T	=	E	R	R	3	(CR)

Projector/Display failure

Character code in hexadecimal	25	32	49	4e	50	54	3d	45	52	52	34	0d
Character	%	2	I	N	P	T	=	E	R	R	4	(CR)

4.5 Mute instruction AVMT

Video mute ON instruction

Character code in hexadecimal	25	31	41	56	4d	54	20	31	31	0d
Character	%	1	A	V	M	T	(SP)	1	1	(CR)

Video mute OFF instruction

Character code in hexadecimal	25	31	41	56	4d	54	20	31	30	0d
Character	%	1	A	V	M	T	(SP)	1	0	(CR)

Audio mute ON instruction

Character code in hexadecimal	25	31	41	56	4d	54	20	32	31	0d
Character	%	1	A	V	M	T	(SP)	2	1	(CR)

Audio mute OFF instruction

Character code in hexadecimal	25	31	41	56	4d	54	20	32	30	0d
Character	%	1	A	V	M	T	(SP)	2	0	(CR)

Video and audio mute ON instruction

Character code in hexadecimal	25	31	41	56	4d	54	20	33	31	0d
Character	%	1	A	V	M	T	(SP)	3	1	(CR)

Video and audio mute OFF instruction

Character code in hexadecimal	25	31	41	56	4d	54	20	33	30	0d
Character	%	1	A	V	M	T	(SP)	3	0	(CR)

Response

Successful execution

Character code in hexadecimal	25	31	41	56	4d	54	3d	4f	4b	0d
Character	%	1	A	V	M	T	=	O	K	(CR)

Out-of-parameter

Character code in hexadecimal	25	31	41	56	4d	54	3d	45	52	52	32	0d
Character	%	1	A	V	M	T	=	E	R	R	2	(CR)

Unavailable time (standby, etc.)

Character code in hexadecimal	25	31	41	56	4d	54	3d	45	52	52	33	0d
Character	%	1	A	V	M	T	=	E	R	R	3	(CR)

Projector/Display failure

Character code in hexadecimal	25	31	41	56	4d	54	3d	45	52	52	34	0d
Character	%	1	A	V	M	T	=	E	R	R	4	(CR)

If the mute function is individually executed or cancelled for the models that do not have audio or video mute functions, "ERR 2" (out of parameter range) is returned.

4.6 Mute status query AVMT ?

Video mute instruction

Character code in hexadecimal	25	31	41	56	4d	54	20	3f	0d
Character	%	1	A	V	M	T	(SP)	?	(CR)

Response

Successful execution

Character code in hexadecimal	25	31	41	56	4d	54	3d	*1	*2	0d
Character	%	1	A	V	M	T	=	*3		(CR)
<p>*1 Values 31–33 *2: values 30–31 *3 Video mute ON: 11 Audio mute ON: 21 Video and audio mute ON: 31 (models without audio function included) Video and audio mute OFF: 30</p>										

Unavailable time (standby, etc.)

Character code in hexadecimal	25	31	41	56	4d	54	3d	45	52	52	33	0d
Character	%	1	A	V	M	T	=	E	R	R	3	(CR)

Projector/Display failure

Character code in hexadecimal	25	31	41	56	4d	54	3d	45	52	52	34	0d
Character	%	1	A	V	M	T	=	E	R	R	4	(CR)

4.7 Error status query ERST ?

Error status query

Character code in hexadecimal	25	31	45	52	53	54	20	3f	0d
Character	%	1	E	R	S	T	(SP)	?	(CR)

Response

Successful execution

Character code in hexadecimal	25	31	45	52	53	54	3d							0d
Character	%	1	E	R	S	T	=	*1	*2	*3	*4	*5	*6	(CR)

*1 Fan error; any of 0–2

*2 Lamp error; any of 0–2

*3 Temperature error; any of 0–2

*4 Cover open error; any of 0–2

*5 Filter error; any of 0–2

*6 Other errors; any of 0–2

0: No error detected or no error detecting function 1:

Warning

2: Error

Unavailable time (lamp ignition underway, etc.)

Character code in hexadecimal	25	31	45	52	53	54	3d	45	52	52	33	0d
Character	%	1	E	R	S	T	=	E	R	R	3	(CR)

Projector/Display failure

Character code in hexadecimal	25	31	45	52	53	54	3d	45	52	52	34	0d
Character	%	1	E	R	S	T	=	E	R	R	4	(CR)

4.8 Lamp number/ lighting hour query LAMP ?

Lamp number and lighting hour query

Character code in hexadecimal	25	31	4c	41	4d	50	20	3f	0d
Character	%	1	L	A	M	P	(SP)	?	(CR)

Response

Projector with one lamp

Character code in hexadecimal	25	31	4c	41	4d	50	3d		...
Character	%	1	L	A	M	P	=		*1
Character code in hexadecimal	20				0d				
Character	(SP)		*2		(CR)				
*1 Usage time of the lamp: 0-99999 (variable length of one- to five-digit number)									
*2 Lamp turned on: 1 Lamp turned off: 0									

Projector with two lamps

Character code in hexadecimal	25	31	4c	41	4d	50	3d		...		
Character	%	1	L	A	M	P	=		*1		
Character code in hexadecimal	20		20					...	20		0d
Character	(SP)		*2	(SP)		*3		(SP)	*4	(SP)	(CR)
*1 Usage time of lamp 1: 0-99999 (variable length of one- to five-digit number)											
*2 Lamp 1 turned on: 1 Lamp 1 turned off: 0											
*3 Usage time of lamp 2: 0-99999 (variable length of one- to five-digit number)											
*4 Lamp 2 turned on: 1 Lamp 2 turned off: 0											

Projector with n lamps

Character code in hexadecimal	25	31	4c	41	4d	50	3d		...				
Character	%	1	L	A	M	P	=		*1				
Character code in hexadecimal	20		20					...	20		...	0d	
Character	(SP)		*2	(SP)		*3		(SP)	*4	(SP)		...	
Character code in hexadecimal			20					...	20			0d	
Character	...		(SP)			*n			(SP)		*m	(CR)	
*1 Usage time of lamp 1: 0-99999 (variable length of a one- to five-digit number)													
*2 Lamp 1 turned on: 1 Lamp 1 turned off: 0													
*3 Usage time of lamp 2: 0-99999 (variable length of a one- to five-digit number)													
*4 Lamp 2 turned on: 1 Lamp 2 turned off: 0													
...													
*n Usage time of lamp n: 0-99999 (variable length of a one- to five-digit number)													
*m Lamp n turned on: 1 Lamp n turned off: 0													
Maximum value of n is 8. Maximum length of the parameter is [1 + 8 x n = 65] bytes.													

* Usage time of lamp is always 0 when it is not counted by the projector.

No lamp

Character code in hexadecimal	25	31	4c	41	4d	50	3d	45	52	52	31	0d
Character	%	1	L	A	M	P	=	E	R	R	1	(CR)

Unavailable time for any reason

Character code in hexadecimal	25	31	4c	41	4d	50	3d	45	52	52	33	0d
Character	%	1	L	A	M	P	=	E	R	R	3	(CR)

Projector/Display failure

Character code in hexadecimal	25	31	4c	41	4d	50	3d	45	52	52	34	0d
Character	%	1	L	A	M	P	=	E	R	R	4	(CR)

4.9 Input toggling list query INST ?

Input toggling list query (Class1)

Character code in hexadecimal	25	31	49	4e	53	54	20	3f	0d
Character	%	1	I	N	S	T	(SP)	?	(CR)

Input toggling list query (Class2)

Character code in hexadecimal	25	32	49	4e	53	54	20	3f	0d
Character	%	2	I	N	S	T	(SP)	?	(CR)

Response (Class1)

Character code in hexadecimal	25	31	49	4e	53	54	3d		
Character	%	1	I	N	S	T	=		
Character code in hexadecimal			20			20		0d	
Character		*1	(SP)		*2	. . .	(SP)	*n	(CR)

*1 Number of the first input source available: 11–59
 *2 Number of the second input source available: 11–59
 . . .
 *n Number of the n-th input source available: 11–59
 Maximum value of n is 50. Maximum length of the parameter is 95bytes

Unavailable time (standby, etc.)

Character code in hexadecimal	25	31	49	4e	53	54	3d	45	52	52	33	0d
Character	%	1	I	N	S	T	=	E	R	R	3	(CR)

Projector/Display failure

Character code in hexadecimal	25	31	49	4e	53	54	3d	45	52	52	34	0d
Character	%	1	I	N	S	T	=	E	R	R	4	(CR)

Response (Class2)

Character code in hexadecimal	25	32	49	4e	53	54	3d		
Character	%	2	I	N	S	T	=		
Character code in hexadecimal			20			20		0d	
Character		*1	(SP)		*2	. . .	(SP)	*n	(CR)

*1 Number of the first input source available: 11–6Z
 *2 Number of the second input source available: 11–6Z
 . . .
 *n Number of the n-th input source available: 11–6Z
 Maximum value of n is 50. Maximum length of the parameter is 95bytes

Unavailable time (standby, etc.)

Character code in hexadecimal	25	32	49	4e	53	54	3d	45	52	52	33	0d
Character	%	2	I	N	S	T	=	E	R	R	3	(CR)

Projector/Display failure

Character code in hexadecimal	25	32	49	4e	53	54	3d	45	52	52	34	0d
Character	%	2	I	N	S	T	=	E	R	R	4	(CR)

4.10 Projector/Display name query NAME ?

Projector/Display name query

Character code in hexadecimal	25	31	4e	41	4d	45	20	3f	0d
Character	%	1	N	A	M	E	(SP)	?	(CR)

Response

Character code in hexadecimal	25	31	4e	41	4d	45	3d			
Character	%	1	N	A	M	E	=			
Character code in hexadecimal	*1	*2	*n	0d
Character				(CR)

*1 Any character (20 to ff in hexadecimal)
 *2 Any character (20 to ff in hexadecimal)
 . . .
 *n Any character (20 to ff in hexadecimal)
 It is necessary to use UTF-8 for the character code set. The value of n is 0–64
 If there is no projector/display name, enter (CR) code directly after '='.

Unavailable time for any reason

Character code in hexadecimal	25	31	4e	41	4d	45	3d	45	52	52	33	0d
Character	%	1	N	A	M	E	=	E	R	R	3	(CR)

Projector/Display failure

Character code in hexadecimal	25	31	4e	41	4d	45	3d	45	52	52	34	0d
Character	%	1	N	A	M	E	=	E	R	R	4	(CR)

4.11 Manufacture name information query INF1 ?

Manufacture name information query

Character code in hexadecimal	25	31	49	4e	46	31	20	3f	0d
Character	%	1	I	N	F	1	(SP)	?	(CR)

Response

Character code in hexadecimal	25	31	49	4e	46	31	3d			
Character	%	1	I	N	F	1	=			
Character code in hexadecimal	*1	*2	*n	0d
Character				(CR)

*1 Any character (20 to 7e in hexadecimal)
 *2 Any character (20 to 7e in hexadecimal)
 . . .
 *n Any character (20 to 7e in hexadecimal) The value of n is 0–32.
 If there is no manufacture name, enter (CR) code directly after ‘=’.

Unavailable time for any reason

Character code in hexadecimal	25	31	49	4e	46	31	3d	45	52	52	33	0d
Character	%	1	I	N	F	1	=	E	R	R	3	(CR)

Projector/Display failure

Character code in hexadecimal	25	31	49	4e	46	31	3d	45	52	52	34	0d
Character	%	1	I	N	F	1	=	E	R	R	4	(CR)

4.12 Product name information query INF2 ?

Product name information query

Character code in hexadecimal	25	31	49	4e	46	32	20	3f	0d
Character	%	1	I	N	F	2	(SP)	?	(CR)

Response

Character code in hexadecimal	25	31	49	4e	46	32	3d				
Character	%	1	I	N	F	2	=				
Character code in hexadecimal	*1	*2	*n	0d	
Character					(CR)
<p>*1 Any character (20 to 7e in hexadecimal)</p> <p>*2 Any character (20 to 7e in hexadecimal)</p> <p>. . .</p> <p>*n Any character (20 to 7e in hexadecimal) The value of n is 0–32.</p> <p>If there is no product name, enter (CR) code directly after '='.</p>											

Unavailable time for any reason

Character code in hexadecimal	25	31	49	4e	46	32	3d	45	52	52	33	0d
Character	%	1	I	N	F	2	=	E	R	R	3	(CR)

Projector/Display failure

Character code in hexadecimal	25	31	49	4e	46	32	3d	45	52	52	34	0d
Character	%	1	I	N	F	2	=	E	R	R	4	(CR)

4.13 Other information query INFO ?

Other information query

Character code in hexadecimal	25	31	49	4e	46	4f	20	3f	0d
Character	%	1	I	N	F	O	(SP)	?	(CR)

Response

Character code in hexadecimal	25	31	49	4e	46	4f	3d			
Character	%	1	I	N	F	O	=			
Character code in hexadecimal	*1	*2	*n	0d
Character				(CR)

*1 Any character (20 to 7e in hexadecimal)

*2 Any character (20 to 7e in hexadecimal)

. . .

*n Any character (20 to 7e in hexadecimal) The value of n is 0–32.

Other information of the projector/display described by the manufacture.

If there is no model information, enter (CR) code directly after '='.

Unavailable time for any reason

Character code in hexadecimal	25	31	49	4e	46	4f	3d	45	52	52	33	0d
Character	%	1	I	N	F	O	=	E	R	R	3	(CR)

Projector/Display failure

Character code in hexadecimal	25	31	49	4e	46	4f	3d	45	52	52	34	0d
Character	%	1	I	N	F	O	=	E	R	R	4	(CR)

4.14 Class information query CLSS ?

Class information query

Character code in hexadecimal	25	31	43	4c	53	53	20	3f	0d
Character	%	1	C	L	S	S	(SP)	?	(CR)

Response (Class1)

Character code in hexadecimal	25	31	43	4c	53	53	3d	31	0d
Character	%	1	C	L	S	S	=	1	(CR)

Class1 model returns 1

Response (Class2)

Character code in hexadecimal	25	31	43	4c	53	53	3d	32	0d
Character	%	1	C	L	S	S	=	2	(CR)

Class2 model returns 2

Unavailable time for any reason

Character code in hexadecimal	25	31	43	4c	53	53	3d	45	52	52	33	0d
Character	%	1	C	L	S	S	=	E	R	R	3	(CR)

Projector/Display failure

Character code in hexadecimal	25	31	43	4c	53	53	3d	45	52	52	34	0d
Character	%	1	C	L	S	S	=	E	R	R	4	(CR)

4.15 Serial number query SNUM ?

Serial number query

Character code in hexadecimal	25	32	53	4e	55	4d	20	3f	0d
Character	%	2	S	N	U	M	(SP)	?	(CR)

Response

Character code in hexadecimal	25	32	53	4e	55	4d	3d		...		0d
Character	%	2	S	N	U	M	=	*1			(CR)

*1 Any character of ASCII(20 to 7e in hexadecimal)Character length is 0-32. The serial number information defined by the manufacturer is indicated.

No serial number information

Character code in hexadecimal	25	32	53	4e	55	4d	3d	0d
Character	%	2	S	N	U	M	=	(CR)

Unavailable time for any reason

Character code in hexadecimal	25	32	53	4e	55	4d	3d	45	52	52	33	0d
Character	%	2	S	N	U	M	=	E	R	R	3	(CR)

Projector/Display failure

Character code in hexadecimal	25	32	53	4e	55	4d	3d	45	52	52	34	0d
Character	%	2	S	N	U	M	=	E	R	R	4	(CR)

4.16 Software version query SVER ?

Software version query

Character code in hexadecimal	25	32	53	56	45	52	20	3f	0d
Character	%	2	S	V	E	R	(SP)	?	(CR)

Response

Character code in hexadecimal	25	32	53	56	45	52	3d		...		0d
Character	%	2	S	V	E	R	=		*1		(CR)

*1 Any character of ASCII(20 to 7e in hexadecimal)
 Character length is 0-32.
 The version information of the software defined by the manufacturer is indicated.
 Version information can be expressed in any way.

No software version information

Character code in hexadecimal	25	32	53	56	45	52	3d	0d
Character	%	2	S	V	E	R	=	(CR)

Unavailable time for any reason

Character code in hexadecimal	25	32	53	56	45	52	3d	45	52	52	33	0d
Character	%	2	S	V	E	R	=	E	R	R	3	(CR)

Projector/Display failure

Character code in hexadecimal	25	32	53	56	45	52	3d	45	52	52	34	0d
Character	%	2	S	V	E	R	=	E	R	R	4	(CR)

4.17 Input terminal name query INN M ?

Input terminal name query

Character code in hexadecimal	25	32	49	4e	4e	4d	20	3f			0d
Character	%	2	I	N	N	M	(SP)	?		*1	(CR)

Response

Character code in hexadecimal	25	32	49	4e	4e	4d	3d		...		0d
Character	%	2	I	N	N	M	=			*2	(CR)

- * 1 The numbers of switchable input source 11 to 6Z (terminal numbers that can be acquired with the INST command)
- * 2 Name of input source specified in * 1 (UTF - 8 character string) Parameter length shall be 128 bytes or less.

Out-of-parameter

Character code in hexadecimal	25	32	49	4e	4e	4d	3d	45	52	52	32	0d
Character	%	2	I	N	N	M	=	E	R	R	2	(CR)

Unavailable time for any reason

Character code in hexadecimal	25	32	49	4e	4e	4d	3d	45	52	52	33	0d
Character	%	2	I	N	N	M	=	E	R	R	3	(CR)

Projector/Display failure

Character code in hexadecimal	25	32	49	4e	4e	4d	3d	45	52	52	34	0d
Character	%	2	I	N	N	M	=	E	R	R	4	(CR)

INN M needs input source number at the time of the query.

The name of the response will be referred to the input source number.

Input terminal name	Input source number when input terminal query
PC	31(RGB1)
HDMI1	51(Digital1)
HDMI2	52(Digital2)

Character code in hexadecimal	25	32	49	4e	4e	4d	20	3f	33	31	0d
Character	%	2	I	N	N	M	(SP)	?	3	1	(CR)

Character code in hexadecimal	25	32	49	4e	4e	4d	3d	50	43	0d
Character	%	2	I	N	N	M	=	P	C	(CR)

4.18 Input resolution query IRES ?

Input resolution query

Character code in hexadecimal	25	32	49	52	45	53	20	3f	0d
Character	%	2	I	R	E	S	(SP)	?	(CR)

Response

Character code in hexadecimal	25	32	49	52	45	53	3d
Character	%	2	I	R	E	S	=

Character code in hexadecimal		...	78		...		0d
Character		*1	x		*2		(CR)

* 1 Horizontal resolution of input signal

* 2 Vertical resolution of input signal

There is no limit on the number of digits.

No signal input

Character code in hexadecimal	25	32	49	52	45	53	3d	2d	0d
Character	%	2	I	R	E	S	=	-	(CR)

Unknown signal

Character code in hexadecimal	25	32	49	52	45	53	3d	2a	0d
Character	%	2	I	R	E	S	=	*	(CR)

Unavailable time for any reason

Character code in hexadecimal	25	32	49	52	45	53	3d	45	52	52	33	0d
Character	%	2	I	R	E	S	=	E	R	R	3	(CR)

Projector/Display failure

Character code in hexadecimal	25	32	49	52	45	53	3d	45	52	52	34	0d
Character	%	2	I	R	E	S	=	E	R	R	4	(CR)

4.19 Recommend resolution query RRES ?

Recommended resolution query

Character code in hexadecimal	25	32	52	52	45	53	20	3f	0d
Character	%	2	R	R	E	S	(SP)	?	(CR)

Response

Character code in hexadecimal	25	32	52	52	45	53	3d
Character	%	2	R	R	E	S	=

Character code in hexadecimal		...		78				0d
Character		*1		x		*2		(CR)

* 1 Horizontal recommend resolution

* 2 Vertical recommend resolution

There is no limit on the number of digits.

Unavailable time for any reason

Character code in hexadecimal	25	32	52	52	45	53	3d	45	52	52	33	0d
Character	%	2	R	R	E	S	=	E	R	R	3	(CR)

Projector/Display failure

Character code in hexadecimal	25	32	52	52	45	53	3d	45	52	52	34	0d
Character	%	2	R	R	E	S	=	E	R	R	4	(CR)

4.20 Filter usage time query FILT ?

Filter usage time query

Character code in hexadecimal	25	32	46	49	4c	54	20	3f	0d
Character	%	2	F	I	L	T	(SP)	?	(CR)

Response

Character code in hexadecimal	25	32	46	49	4c	54	3d		...		0d
Character	%	2	F	I	L	T	=		* 1		(CR)

*1 Filter usage time: 0-99999 (variable length of one- to five-digit number)

Filter usage time is always 0 when it is not counted by the projector.

No filter

Character code in hexadecimal	25	32	46	49	4c	54	3d	45	52	52	31	0d
Character	%	2	F	I	L	T	=	E	R	R	1	(CR)

Unavailable time for any reason

Character code in hexadecimal	25	32	46	49	4c	54	3d	45	52	52	33	0d
Character	%	2	F	I	L	T	=	E	R	R	3	(CR)

Projector/Display failure

Character code in hexadecimal	25	32	46	49	4c	54	3d	45	52	52	34	0d
Character	%	2	F	I	L	T	=	E	R	R	4	(CR)



4.21 Lamp replacement model number query RLMP ?

Lamp replacement model number query

Character code in hexadecimal	25	32	52	4c	4d	50	20	3f	0d
Character	%	2	R	L	M	P	(SP)	?	(CR)

Response

Character code in hexadecimal	25	32	52	4c	4d	50	3d		...		0d
Character	%	2	R	L	M	P	=		* 1		(CR)

*1 Lamp replacement model number. Maximum length of the parameter is 128 bytes.
If there are multiple replacement model numbers, they are separated by (SP).

No replacement model number

Character code in hexadecimal	25	32	52	4c	4d	50	3d	0d
Character	%	2	R	L	M	P	=	(CR)

Unavailable time for any reason

Character code in hexadecimal	25	32	52	4c	4d	50	3d	45	52	52	33	0d
Character	%	2	R	L	M	P	=	E	R	R	3	(CR)

Projector/Display failure

Character code in hexadecimal	25	32	52	4c	4d	50	3d	45	52	52	34	0d
Character	%	2	R	L	M	P	=	E	R	R	4	(CR)



4.22 Filter replacement model number query RFIL ?

Filter replacement model number query

Character code in hexadecimal	25	32	52	46	49	4c	20	3f	0d
Character	%	2	R	F	I	L	(SP)	?	(CR)

Response

Character code in hexadecimal	25	32	52	46	49	4c	3d		...		0d
Character	%	2	R	F	I	L	=		* 1		(CR)

*1 Filter replacement model number. Maximum length of the parameter is 128 bytes.

If there are multiple replacement model numbers, they are separated by (SP).

No replacement model number

Character code in hexadecimal	25	32	52	46	49	4c	3d	0d
Character	%	2	R	F	I	L	=	(CR)

Unavailable time for any reason

Character code in hexadecimal	25	32	52	46	49	4c	3d	45	52	52	33	0d
Character	%	2	R	F	I	L	=	E	R	R	3	(CR)

Projector/Display failure

Character code in hexadecimal	25	32	52	46	49	4c	3d	45	52	52	34	0d
Character	%	2	R	F	I	L	=	E	R	R	4	(CR)

4.23 Speaker volume adjustment instruction SVOL

Speaker volume adjustment instruction

Character code in hexadecimal	25	32	53	56	4f	4c	20		0d
Character	%	2	S	V	O	L	(SP)	* 1	(CR)

* 1 Specify 0 to decrease the speaker volume by one level from the current level Specify 1 to increase the speaker volume by one level from the current level

Response

Successful execution

Character code in hexadecimal	25	32	53	56	4f	4c	3d	4f	4b	0d
Character	%	2	S	V	O	L	=	O	K	(CR)

If a speaker is not installed

Character code in hexadecimal	25	32	53	56	4f	4c	3d	45	52	52	31	0d
Character	%	2	S	V	O	L	=	E	R	R	1	(CR)

Out-of-parameter

Character code in hexadecimal	25	32	53	56	4f	4c	3d	45	52	52	32	0d
Character	%	2	S	V	O	L	=	E	R	R	2	(CR)

Unavailable time for any reason

Character code in hexadecimal	25	32	53	56	4f	4c	3d	45	52	52	33	0d
Character	%	2	S	V	O	L	=	E	R	R	3	(CR)

Projector/Display failure

Character code in hexadecimal	25	32	53	56	4f	4c	3d	45	52	52	34	0d
Character	%	2	S	V	O	L	=	E	R	R	4	(CR)

* As for a specification to increase the speaker volume by one level when it is in the maximum state, and a specification to decrease the speaker volume by one level when it is in the minimum state, the response for a normal case is returned.

Here, the volume related to audio output (audio out, built-in speaker in equipment model, etc.) is referred to as the speaker volume.

4.24 Microphone volume adjustment command MVOL

Microphone volume adjustment instruction

Character code in hexadecimal	25	32	4d	56	4f	4c	20		0d
Character	%	2	M	V	O	L	(SP)	* 1	(CR)

*1 Specify 0 to decrease the microphone volume by one level from the current level Specify 1 to increase the microphone volume by one level from the current level

Response

Successful execution

Character code in hexadecimal	25	32	4d	56	4f	4c	3d	4f	4b	0d
Character	%	2	M	V	O	L	=	O	K	(CR)

If a microphone is not installed

Character code in hexadecimal	25	32	4d	56	4f	4c	3d	45	52	52	31	0d
Character	%	2	M	V	O	L	=	E	R	R	1	(CR)

Out-of-parameter

Character code in hexadecimal	25	32	4d	56	4f	4c	3d	45	52	52	32	0d
Character	%	2	M	V	O	L	=	E	R	R	2	(CR)

Unavailable time for any reason

Character code in hexadecimal	25	32	4d	56	4f	4c	3d	45	52	52	33	0d
Character	%	2	M	V	O	L	=	E	R	R	3	(CR)

Projector/Display failure

Character code in hexadecimal	25	32	4d	56	4f	4c	3d	45	52	52	34	0d
Character	%	2	M	V	O	L	=	E	R	R	4	(CR)

* As for a specification to increase the microphone volume by one level when it is in the maximum state, and a specification to decrease the microphone volume by one level when it is in the minimum state, the response for a normal case is returned.

Here, the volume related to voice input (audio in, microphone terminal to be input to the model, etc.) is referred to as the microphone volume.



4.25 Freeze instruction FREZ

Freeze instruction

Character code in hexadecimal	25	32	46	52	45	5a	20		0d
Character	%	2	F	R	E	Z	(SP)	*1	(CR)

*1 Specify 1 to freeze the screen Specify 0 to cancel freeze

Response

Successful execution

Character code in hexadecimal	25	32	46	52	45	5a	3d	4f	4b	0d
Character	%	2	F	R	E	Z	=	O	K	(CR)

Not supported

Character code in hexadecimal	25	32	46	52	45	5a	3d	45	52	52	31	0d
Character	%	2	F	R	E	Z	=	E	R	R	1	(CR)

Out-of-Parameter

Character code in hexadecimal	25	32	46	52	45	5a	3d	45	52	52	32	0d
Character	%	2	F	R	E	Z	=	E	R	R	2	(CR)

Unavailable time for any reason

Character code in hexadecimal	25	32	46	52	45	5a	3d	45	52	52	33	0d
Character	%	2	F	R	E	Z	=	E	R	R	3	(CR)

Projector/Display failure

Character code in hexadecimal	25	32	46	52	45	5a	3d	45	52	52	34	0d
Character	%	2	F	R	E	Z	=	E	R	R	4	(CR)

4.26 Freeze status query FREZ ?

Freeze status query

Character code in hexadecimal	25	32	46	52	45	5a	20	3f	0d
Character	%	2	F	R	E	Z	(SP)	?	(CR)

Response

Successful execution

Character code in hexadecimal	25	32	46	52	45	5a	3d		0d
Character	%	2	F	R	E	Z	=	*1	(CR)

*1 Freeze status
 Freeze status ON: 1
 Freeze status OFF:0

Not Supported

Character code in hexadecimal	25	32	46	52	45	5a	3d	45	52	52	31	0d
Character	%	2	F	R	E	Z	=	E	R	R	1	(CR)

Unavailable time for any reason

Character code in hexadecimal	25	32	46	52	45	5a	3d	45	52	52	33	0d
Character	%	2	F	R	E	Z	=	E	R	R	3	(CR)

Projector/Display failure

Character code in hexadecimal	25	32	46	52	45	5a	3d	45	52	52	34	0d
Character	%	2	F	R	E	Z	=	E	R	R	4	(CR)

5. Authentication

5.1 Authentication procedure

To enter into communication with each other using PJLINK commands, both the projector/display and the CONTROLLER must carry out the authentication procedure in advance. The method used for skipping the authentication procedure is explained in Chapter 5.2.

An authentication procedure is executed once after each establishment of TCP/IP connection. Without passing through the authentication procedure, the projector/display will not accept PJLINK commands and subsequent operations.

The authentication procedure involves a password verification process. A password message sent to the network will be converted into a 32-byte encrypted message with a random number assigned by the projector/display, and the MD5 algorithm.

The password and other parameters to be used in authentication must meet the following requirements:

Parameter	Requirement
Password	32 or fewer ASCII alphanumeric characters
Random numbers	4-byte integer numbers (8 ASCII lowercase characters in hexadecimal notation)
Encrypted message	32-byte ASCII string

The steps of the authentication procedure are as follows:

1. The CONTROLLER connects to the projector/display.
2. The projector/display returns a response in the form of (1-1). The response includes the header 'PJLINK', a '1' indicating authentication procedure, and a random number sequence.
3. After receiving the response, the CONTROLLER transmits a PJLINK command line, at the beginning of which the encrypted password is presented in the form of (1-2). The encryption procedure is described in (1-3).
4. The projector/display verifies the received encrypted password against the password encrypted by the projector/display itself. If verified, it will be able to receive PJLINK commands in the TCP/IP session. If the projector/display fails to receive the password within 30 seconds after the (1-1) response transmission, the projector/display forcibly terminates the connection through the timeout procedure and returns to a standby state.
5. If the password is verified, the projector/display sends a response to the PJLINK command, and keeps the TCP session alive. If the password is invalid, the projector/display will send an error response in the form of (1-4) to the CONTROLLER and will wait until the CONTROLLER terminates the connection. If the CONTROLLER fails to disconnect, the projector/display will automatically terminate the connection 30 seconds after sending the error response.

The following are examples using the password and random number:

Password	JBMIAPjectorLink
Random number	0x498e4a67

(1-1) Response from the projector/display

Character code in hexadecimal	50	4a	4c	49	4e	4b	20	31	20	34	39	38	65	34	61	36	37	0d
Character	P	J	L	I	N	K	(SP)	1	(SP)	4	9	8	e	4	a	6	7	(CR)

(1-2) Encrypted password

Character code in hexadecimal	35	64	38	34	30	39	62	63	31	63	33	66	61	33	39	37
Character	5	d	8	4	0	9	b	c	1	c	3	f	a	3	9	7

34	39	34	33	34	61	61	33	61	35	63	33	38	36	38	32
4	9	4	3	4	a	a	3	a	5	c	3	8	6	8	2

25	31	50	4f	57	52	20	31	0d
%	1	P	O	W	R	(SP)	1	(CR)

(1-3) Encryption procedure

The password string “JBMIAPjectorLink” is added to the end of the random sequence “498e4a67” issued by the projector/display. The digest of the resultant string “498e4a67 JBMIAPjectorLink” is carried out with the MD5 algorithm.

In hexadecimal notation, the result will be “5d8409bc1c3fa39749434aa3a5c38682”.

(1-4) Invalid password error message

Character code in hexadecimal	50	4a	4c	49	4e	4b	20	45	52	52	41	0d
Character	P	J	L	I	N	K	(SP)	E	R	R	A	(CR)

(ERRA represents ERR or Authorization)

Note that in the PJLINK authentication procedure the password and the first command are transmitted at the same time. The resultant data to be sent is as shown in (1-2). When the projector/display receives the data shown in (1-2), it checks only the first 32 bytes for password verification. If the password is verified, the projector/display accepts the 33rd byte and the following bytes as a PJLINK command. If the password is invalid, it will send an invalid password error message in the form shown in (1-4) and ignore the 33rd and following bytes.



5.2 No authentication procedure (Security nullification)

The password authentication procedure may be skipped upon such user setting (security nullification).

If the projector/display does not have a password saved or the security function of the projector/display is turned off, the projector/display transmits (1-5) as the first response after communication. Upon receipt of this response, the CONTROLLER skips the authentication procedure. Also, the CONTROLLER can transmit the first PJLINK command without adding an encrypted password.

Note that in the case of no random number issued by the projector/display, the execution of user authentication is disabled.

(1-5) Response from projector/display (security OFF)

Character code in hexadecimal	50	4a	4c	49	4e	4b	20	30	0d
Character	P	J	L	I	N	K	(SP)	0	(CR)

5.3 Continuous command transmissions on the same connection

The CONTROLLER is able to transmit PJLINK commands continuously within 30 seconds after the transmission of the projector's/display's last response, as long as the TCP connection is alive. The CONTROLLER can transmit a command any number of times within 30 seconds after transmission by the projector/display of each response to command.

However, if multiple commands are transmitted before receiving the projector's/display's response, the projector's/display's response to and execution of these commands are not guaranteed.

As for the transmission of the second or subsequent PJLINK commands, the encrypted password string to be presented to the command for the authentication procedure may be omitted, although there is no problem adding the encrypted password to the second or subsequent command transmission.

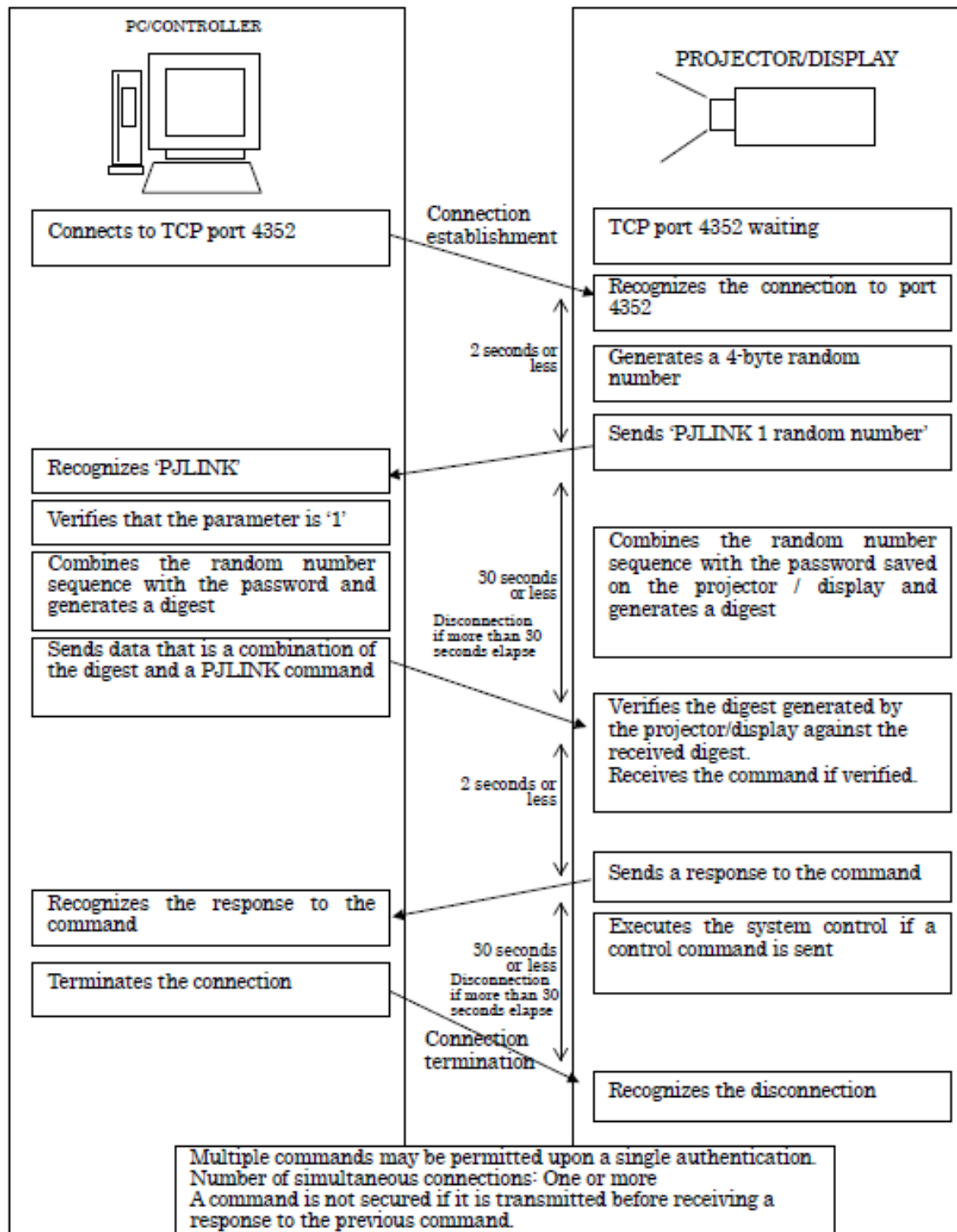
5.4 Disconnection

The CONTROLLER must terminate the TCP connection as soon as the required command transmission is completed. If somehow the CONTROLLER terminates the connection or the projector/display fails to receive a new PJLINK command within 30 seconds after the transmission of the projector's/display's last response, the projector/display is to perform timeout processing.

By this timeout processing, the projector/display forcibly terminates the TCP connection, releases the resources, and returns to a standby state.

Examples of the connection sequence are shown in Figs. 1 to 3 below.

Fig. 1: Projector/Display security is active]



The digest is obtained by applying the MD5 (Message Digest5) algorithm [RFC1321]

Fig. 2: Power ON with the projector's/display's authentication procedure applied (Security ON)

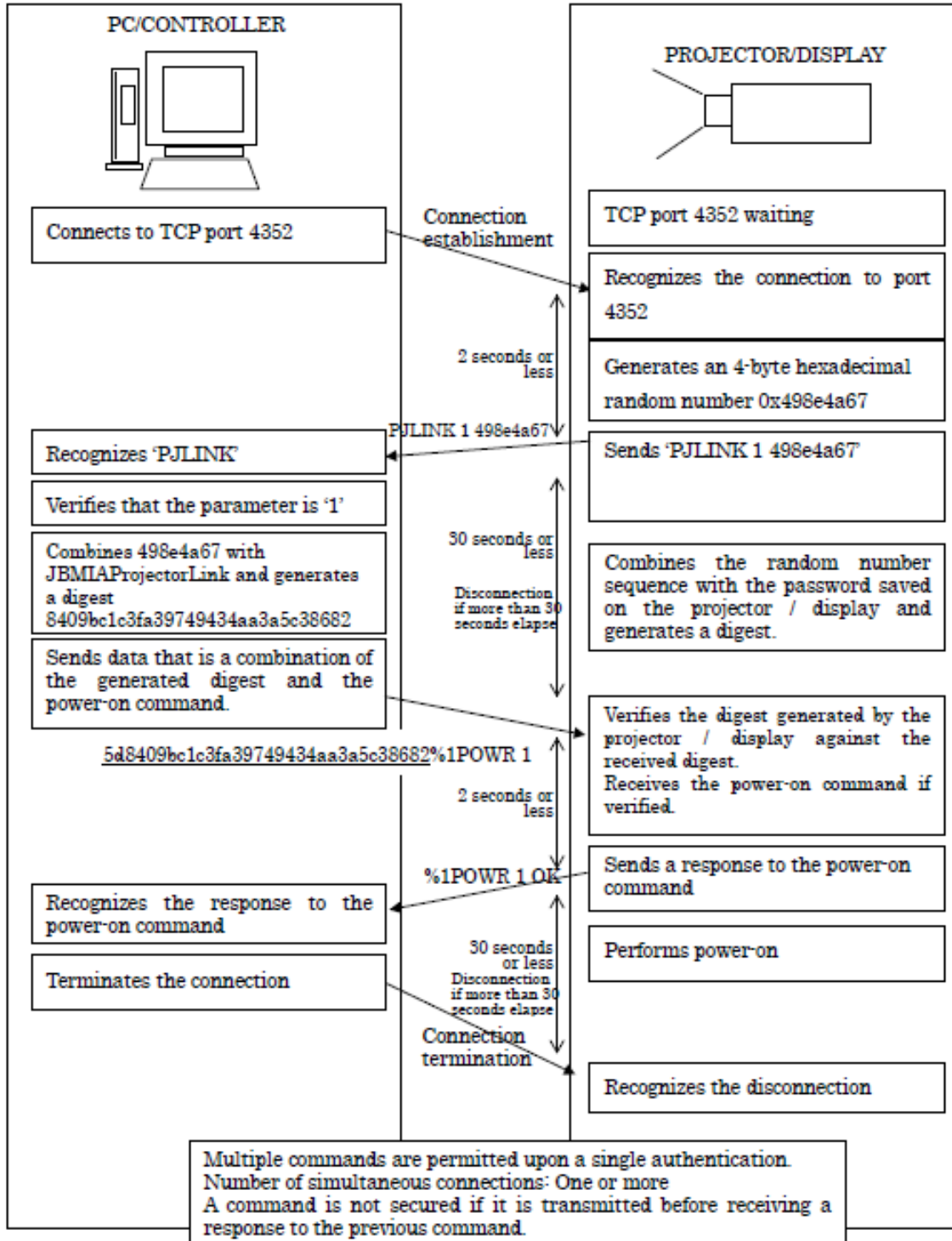
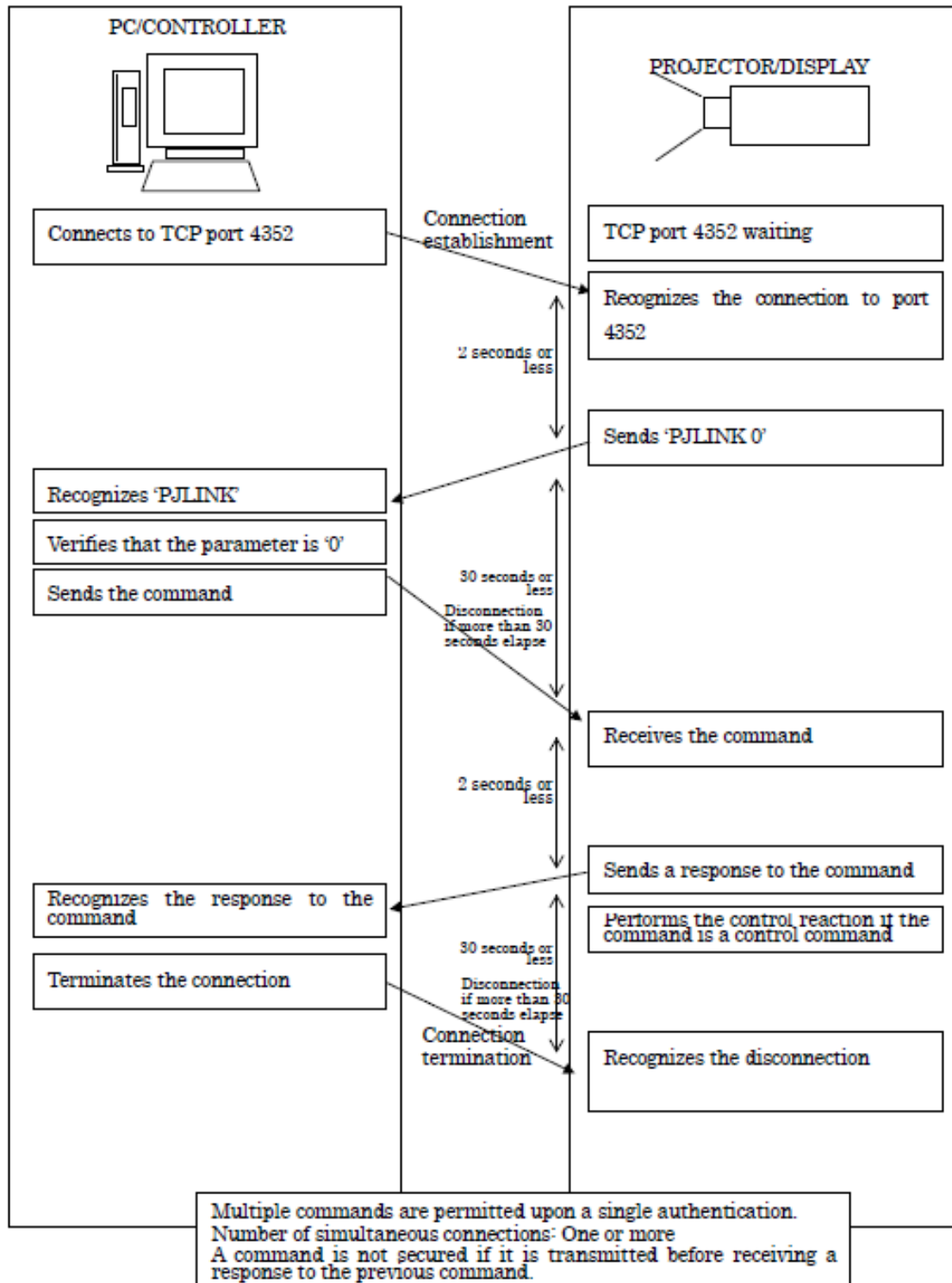


Fig. 3: No authentication procedure of the projector/display (Security OFF)



6. Application Conventions

Constraints on the use of PJLink are as follows:

[Connection method]

This command is for network connection only and does not support other connections such as serial port and USB connections.

[About IPv6 address]

- Since it is possible to assign multiple IPv6 addresses to one device, it is necessary to clarify which one is to be used. Generally, the priority is determined and returned based on the IPv6 address selection policy table described in RFC 3484.

Reference Table RFC3484 IPv6 Default address selection policy table

Prefix	Precedence	Label
::1/128	50	0
::/0	40	1
2002::/16	30	2
::/96	20	3
::ffff:0:0/96	10	4

[Authentication]

When the security mode of the projector/display is active, it is necessary to perform the authentication procedure. Without successful authentication, none of the commands can be used. For details of the authentication procedure, refer to [5. Authentication].

However, 3.2 search protocols and 3.3 state protocols added from Class 2 communicate without authentication procedures.

[Receiving time]

Commands sent within the following periods of time are not guaranteed to transmit successfully:

Approximately 10 seconds (*2) immediately after the projector/display starts power-on (*1) When the projector/display switches the signal (*3)

Time interval between the projector's/display's reception of a command and its issuance of a response command

Time interval between the projector's/display's completion of lamp cooling and its change of status to standby

*1: The timing of the projector's/display's status change from standby to video projection

*2: Refer to the specification of the projector/display.

*3: Signal switching due to input terminal switch and input signal change included.

[Simultaneous connection]

- The number of CONTROLLERS to be connected simultaneously varies with the projector/display model. Refer to the specifications of the projector/display.
- Simultaneous commands from multiple CONTROLLERS are not guaranteed to transmit successfully.
- As for commands transmitted from multiple CONTROLLERS, the last received command will be effective.

[Automatic disconnection]

The projector/display terminates the connection if it does not receive a command within 30 seconds after establishment of the connection or after the issuance of a response command.

[Response method]

The projector/display issues a response command within 2 seconds (*1) after receiving a command. However, it will not issue a response command when it receives a command that does not meet command format requirements. See Chapter 2 for the command format requirements.

*1:Refer to the specifications of the projector/display.

[Search protocol]

- Since it is a protocol using UDP, there is a possibility that the search start command of the application does not reach the projector/display, or the search response does not reach the application.
- When it is immediately after activation of the projector/display, the search response may not be available.

[Status Notification Protocol]

- Since it is a protocol using UDP, the status notification of the projector/display may not reach the application.
 - The number of host addresses that can be registered as a notification destination is at least 1, and no further specification is made in this specification with respect to more addresses. Refer to the specifications of each projector/display.
 - Any mechanism such as the mechanism of changing notification destination for each state of occurrence is not prescribed in this specification. Refer to the specifications of each projector/display.
- Adding commands or parameters specified in this specification, or using them for different purposes is prohibited.